

**March  
2009**

## Presidents' Message

As we all try to contain our longings for spring, here are some updates on what's happening with AAUW.

At our April 22nd meeting we will be electing new Branch officers. The slate of current nominations will be found elsewhere in this issue of FOLIAGE. You will quickly note, we do not have a nomination for the position of President. If you are interested or know anyone who would be interested in being nominated for this position, please contact Cleo Powers. Also at the April 22nd meeting we will vote on the proposed budget (in this newsletter). Please take time to look at it.

The Board is asking members to complete a survey (see info in this newsletter). We are very interested in your responses about this past year and your ideas for next year. Soon we begin our planning phase for the 2008-2009 program year.

Changes are also taking place at the national AAUW level. I would strongly encourage you to take time to log on to the AAUW web site ([aauw.org](http://aauw.org)) and go to the Member Center and look at the proposed bylaw changes to be voted on at the AAUW National meeting in St. Louis in June. A major change in the proposed AAUW Bylaws is the *elimination of requirements for membership other than support of AAUW's mission and purpose*. The rationale given states, "Allowing all

those who wish to join us will not change AAUW's mission, focus, or program. The work of AAUW will still be dedicated to equity for women and girls through advocacy, education, philanthropy, and research, including the promotion and support of higher education for women. AAUW is an organization focused on equity and this change will give us equality in membership."

Our local Scholarship is awaiting the arrival of applications from UW-Eau Claire and CVTC students. Even though our Endowment Fund at UW-Eau Claire took a beating this year due to the economic downturn, we will still be able to support our scholarships because of the great success we had with our book sale last fall.

We look forward to seeing you at our upcoming events.

### **Cleo Powers**

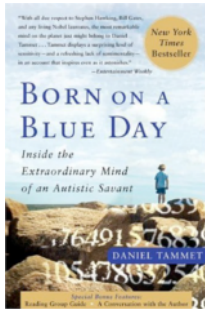
([powerscj@uwec.edu](mailto:powerscj@uwec.edu)) 834-0794

### **Dawn Bosold**

([dbosold@hotmail.com](mailto:dbosold@hotmail.com)) 835-4055



## Book Group: *Born on a Blue Day*



Our upcoming books and dates are: Tuesday, April 7 at 7:30 at Dee Schorr's to discuss *Born on a Blue Day* by Daniel Tammet (the story of an autistic savant), Tuesday, May 5 at 7:30 at Marge Quaid's to discuss

*March* by Geraldine Brooks, and Tuesday, June 2 at Ginny Jordan's to discuss *Blood of Flowers* by Anita Amirrezvani.

\*\* Our group has gotten very large this year, so **we currently do not have room for new members**. I am sorry to have to say that, but we meet in homes and we have to keep the group at a number that works for that venue.

Chris Kondrasuk  
835-1683  
[chris@chrisray.org](mailto:chris@chrisray.org)

## Slate of Officers

The AAUW Board acting as the Nomination Committee puts forth the following names for the offices listed below for 2009-2011:

**PRESIDENT:** no nominations at this time

**MEMBERSHIP CO-CHAIRS:**  
Margot Bouchard (1 year term) and  
Linda Spaeth (2 year term)

**PROGRAM CO-CHAIR:** Barbara Radke

## Upcoming Events

March 24 at 7:00 p.m.

**Program:** Kate Bowman  
RCU Community Room at CVTC

April 2 at 6:30 p.m.

**Board Meeting**  
Pam Hicks' home

April 4 at 9:00 a.m.

**Girl Scouts Science Spectacular**  
UWEC

April 22 at 7:00 p.m.

**Program:** Annual Meeting/Kathy Sultan/Pies  
Sandy Hume's home

April 28 at 11:00 -1:30

**Pay Equity Bake Sale**  
UWEC and CVTC

May 1-3

**AAUW State Convention**  
Wisconsin Rapids

May 11 at 6:00 p.m.

**Program:** Eleanor Roosevelt Walk/Salad Supper/Carrie Andringa/  
First Congregational Church

May 17 at 1:00 p.m.

**AAUW Board Planning Meeting**  
Margot Bouchard's home



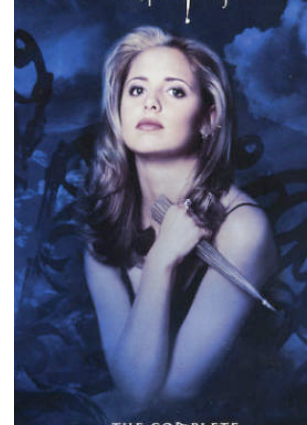
## March Program: 3<sup>rd</sup> Wave Feminism with Kate Bowman

On Tuesday, March 24, 2009, in honor of Women's History Month, Kate Bowman, UWEC, will explore the theories and texts of the contemporary Third Wave of Feminism in the context of U.S. feminist historical movements.

Ms. Bowman teaches as an adjunct faculty member in Women's Studies at the University of Wisconsin-Eau Claire and works as a legal advocate for victims of sexual assault and domestic violence at The Bridge to Hope crisis center in Menomonie.

The meeting will be held in the RCU Community Room at CVTC. Members/guests may park in the front visitors lot (to the left when facing the building). Follow the sign upon entering the building.

Please plan to join us for this interesting and stimulating presentation.



<http://auweauclaire.org/>

STORIES

Our local branch is conducting a membership survey. Your responses will help us plan branch programs and commitments for the upcoming year

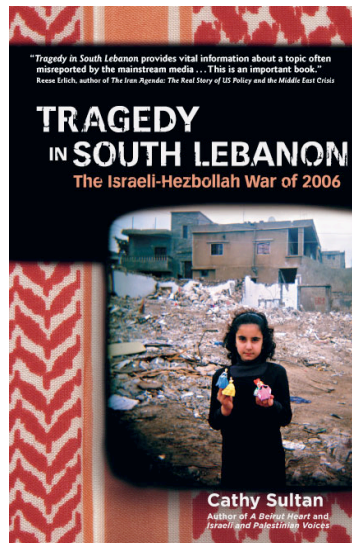
Please visit our website and click on

Survey  
2008-09

Your responses are anonymous.

Members receiving the newsletter in print format will receive hardcopies of the survey.

STORIES



### Cathy Sultan

Annual Meeting  
April 22 at 7:00 p.m.  
Sandy Hume's Home

Cathy Sultan, an Eau Claire author, will be joining us to update us on the current events in the Middle East and to review her third book, *Tragedy in South Lebanon: The Israeli-*

*Hezbollah War of 2006.*

The book is available through the library and at Borders, although even if you do not get it read, please join us for the meeting.

Cathy has a wonderful website – simply google Cathy Sultan or find it at: <http://www.cathysultan.com/>

## AAUW - EAU CLAIRE BRANCH PROPOSED 2009-10 BUDGET

### CARRY FORWARD

Operating Expenses	1,646.00
Book Sale Rental	1,283.00
National Conference	0.00

### INCOME

Dues	4,550.00
\$70 x 65 members	
Book Sale	9,200.00
Interest	16.00
Fund Raiser (LAF Silent Auction)	500.00
Misc. Fund Raising	175.00

**TOTAL INCOME** **\$17,370.00**

### EXPENSES

#### Dues

National (65 members x \$49)	3,185.00
State (65 members x \$10)	650.00
Student member (5 affiliates x \$22)	110.00

#### Meeting Expenses

Rent	150.00
Hospitality	50.00
Speakers/Programs	150.00

#### Conventions/Workshops

National	1,800.00
State	1,200.00
Other (Regional Meetings)	50.00

#### Operating Expenses

Liability Insurance	150.00
Newsletter	250.00
Membership	100.00
Executive Board	75.00
Book Sale	2,400.00

#### Scholarships

UWEC Foundation (Min. of \$500 each)	3,000.00
CVTC Foundation (Min. of \$500 each)	1,000.00
UWEC Endowment	1,000.00

#### National Contributions

Legal Advocacy Fund	500.00
Education Foundation	1,000.00

#### Community Action/Organ

Comm. Action (MS Adventure Girls, etc.)	300.00
Mis. (Women of Dist/Donation Requests)	100.00

**Mis. Expenses (Book Sale Video)** **150.00**

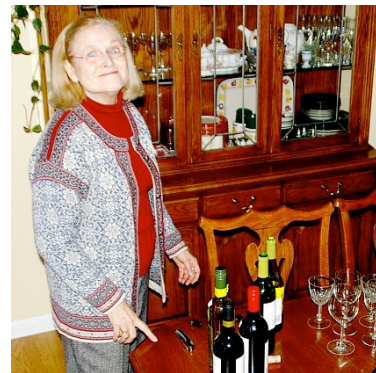
**TOTAL EXPENSES** **\$17,370.00**

**Note:** The vote on the 2009-10 Proposed Budget occurs at our April 22<sup>nd</sup> Program:

**Time:** 7p.m.

**Program:** Annual Meeting/Kathy Sultan/Pies

**Location:** Sandy Hume's



# Pay Equity Bake Sale

Tuesday, April 28<sup>th</sup> 1:00 a.m. – 1:30 p.m.  
UWEC Campus – Hibbard Humanities Hall



We need bakers and staffers!

- Bakers can drop off their baked goods to Kim the night before or bring them at the start of the sale
- Volunteers needed for a shift between 10:30 a.m. - 1:30 p.m.
- We can arrange parking for you

**...because equity is STILL an issue!**

**Can you help? Please let me know if you can bake and/or staff the sale:** Kim Wellnitz 970.443.2964  
[kimwellnitz@yahoo.com](mailto:kimwellnitz@yahoo.com)

Proceeds raised will go towards the Legal Advocacy fund.

---

## Celebrate Pay Equity Day– April 29, 2009

The Equal Pay Act was passed in 1968. Since that time women's career options have grown dramatically. Women outnumber men in college enrollment, college graduation rates, and women's numbers in the work force continue to rise. Yet women still make 78 cents to their male colleagues \$1.00. Hour by hour this inequity adds up. What starts as a slight difference early in a woman's work history grows over forty years to a \$20,000 difference. Because women are paid less their pensions and social security benefits are less than their male counterparts.

<b>AGE</b>	<b>AVERAGE SALARY</b>
<b>15-24</b>	WOMEN: \$23,357 MEN: \$26,100
<b>25-44</b>	WOMEN: \$41,558 MEN: \$55,286
<b>45-64</b>	WOMEN: \$44,808 MEN: \$67,040

Source: U.S. Census Bureau

Public Policy in this area does make a difference, and AAUW is working hard on this issue. You can join the effort for equal pay by the following:

- Respond to the AAUW Two Minute Activist and read about the issues.  
[http://www.aauw.org/advocacy/issue\\_advocacy/actionpages/paycheckfairness.cfm](http://www.aauw.org/advocacy/issue_advocacy/actionpages/paycheckfairness.cfm)
- Send a postcard to congress urging them to pass the Ledbetter Pay Check Fairness Bill  
<http://www.aauw.org/postcards/keepthechange.cfm>
- Participate in the Eau Claire AAUW Pay Equity bake sale to be held April 29

Mary Hayden

Mary Beth Kelley-Lowe

---

**AAUW VISION STATEMENT** - *AAUW will be a powerful advocate and visible leader in equity and education through research, philanthropy, and measurable change in critical areas impacting the lives of women and girls..*

**AAUW MISSION** - *AAUW advances equity for women and girls through advocacy, education and research.*

**FOLIAGE** - *Newsletter of the American Association of University Women - Eau Claire Branch*  
*Send or call items of interest to Kate Hinnant, kate.hinnant@gmail.com, 831-0182, 220 Roosevelt Ave, Eau Claire, WI 54701*



March 24 at 7:00 p.m.  
**Program:** Kate Bowman  
RCU Community Room at CVTC

April 22 at 7:00 p.m.  
**Program:** Annual Meeting/Kathy Sultan/Pies  
Sandy Hume's home

220 Roosevelt Ave  
Eau Claire, WI 54701