

From the Presidents

As this *Foliage* entry is prepared, winter still continues to grip our area and we long for the real arrival of spring. One AAUW event that marks the spring season for us is the Pay Equity Day, which is April 22nd this year. Pay Equity Day is the annual symbolic day on which women's average wages catch up to men's from the previous year. A woman's male counterpart must work five days a week for twelve months, whereas she will work seven days a week for sixteen months to earn equivalent wages. Keep this in mind as you prepare your treats to be brought for the Pay Equity Bake Sale. We have traditionally held the sale at UWEC (Hibbard Hall) each year but this year we are also adding a sale site at CVTC. AAUW encourages anyone working at a Pay Equity event to wear red to represent the way the pay gap puts women "in the red".

Speaking of finances, we enjoyed a stimulating discussion of Jean Chatzky's book, *Make Dollars Not Excuses*, at our April Branch meeting, feasted on a superb array of pies, and soaked up the spectacular view of Lake Altoona from Sandy Hume's living room. Thanks for opening your gorgeous home to us, Sandy! We also elected Christine Kondrasuk to the office of Secretary/Communications and Donna Weidman to a second term as Finance Officer. They will be formally installed in these positions at the May Branch meeting. The proposed 2008-2009 budget document circulated in the last issue of *Foliage* was also approved.

At the March 3, 2008 Board Meeting, revisions to the Branch Policy Sheet were approved. Most notable of the changes was the inclusion of the distribution plan for the excess profits from the AAUW annual book sale. (See the revised document in this issue of *Foliage*)

The Branch delegation to the State Convention on April 25-27 this year includes Margot Bouchard, Lois Helland, and Nina Albanese-Kotar who all hold state level Board offices as well as Dawn Bosold, Cleo Powers, Donna Weidman, Kim Wellnitz and Jodi Simek. Kim has been nominated for the state level position of the Education Foundation Vice President. WAY TO GO KIM!!!

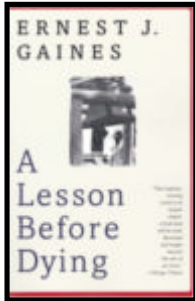
As we quickly approach the end of another year of AAUW activities, our thoughts are already turning to 2008-2009. The Board will hold a planning session on May 18th at Margo Bouchard's home. Input is welcomed from any Branch member. Please share your ideas for future program topics, speakers, projects, etc. December 2008 also marks the 50th anniversary of the chartering of the AAUW – Eau Claire Branch. Encourage new members to join us for what should be another activity packed year.

Cleo Powers (powerscj@uwec.edu) 834-0794

Dawn Bosold (dbosold@hotmail.com) 834-4055



A plethora of pies on hand at the Annual Meeting

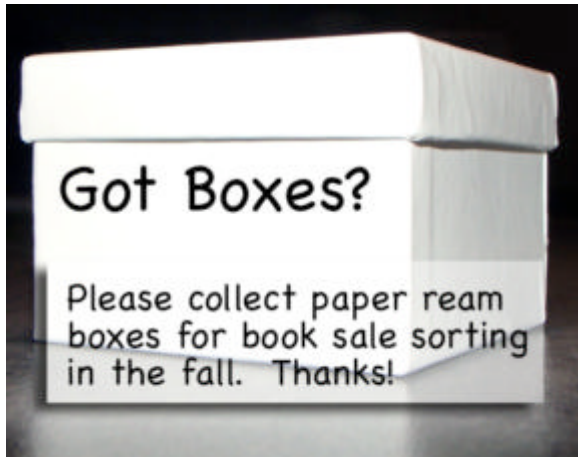


**Book Group:
A Lesson Before Dying**

The Book Group will be discussing *A Lesson Before Dying* by Ernest J. Gaines on Tuesday, May 6th at Marge Quaid's. Multiple copies of this month's book are available at the Public Library. Book group begins at 7:30 and is always on the first Tuesday of the month.

The last meeting of the year will occur on Tuesday, June 3rd.

If you are new to the group please call Chris Kondrasuk (835-1638). Books are available through the library.



Save these dates!

Dates for the **2008 Book Sale** are set:

Friday – Sunday: October 10-12th

Please contact Manda Krier if you have questions or are interested in participating:
836-3327 (work),
krieram@uwec.edu



A Fine *State* of Affairs

The Wisconsin State Convention is right around the corner: April 25-27th in Brookfield. Our local branch has a large contingent going to represent us. But what everyone may not know is that four of eight attendees are serving at the state level:

- Nina Albanese-Kotar – State International Chair,
- Lois Helland – State Bylaws Chair,
- Margot Bouchard – District IV Coordinator,
- Kim Wellnitz – candidate for State Educational Foundation Vice-president

Kim is running unopposed for the State EF Vice-President. **Thank you, Kim, for taking on this important job!**

Due you know what's due?

That's right! It's time to turn in your annual dues. Please mail a check for \$70 made out to "AAUW-Eau Claire" to Donna Weidman, 3112 Mercury Ave, Eau Claire, WI 54703. Or bring your check to our May 14th program.



Location Change!

Please note that our May 14th program has been **moved to the First Congregational Church**. Join us at 6pm for the **Eleanor Roosevelt Walk**, followed by a presentation on "**Girls Bullying Girls**" by Deb Pattee.

AAUW – EAU CLAIRE BRANCH

Policy Sheet

Projects or Positions involving Community Action Undertaken in the Name of AAUW

1. **The Board will determine if:**
 - a. **The project or position reflects Association or Division policy and/or position. (See Bylaws Article IV. Use of Name)**
 - b. **The subject is compatible with our mission – Educational, Cultural Interest, the Community and International Relations.**
2. **Branch members will be notified prior to the next regular meeting.**
3. **A quorum (20% of membership) shall be present at this regular meeting and shall be an affirmative vote of three-fourths of those present.**
4. **A special meeting may be called by the president, a majority of members of the board of directors, or by the written request of 20% of the members of the branch. Branch members will be notified of this meeting at least five (5) days prior to the date of the meeting. Establishment of a quorum at this special meeting may include members present and written communication received prior to the meeting.**

Finances

1. **Expenses of Delegates to Division and Association Conventions and Workshops**
 - a. **The following monies will be available for delegates to Division and Association Conventions. Expense accounts must be submitted to the treasurer in detail.**
 - ◆ **Transportation: 35 cents per mile if travel is by car or reimbursement for the least expensive mode of public transportation.**
 - b. **The Executive Committee decides on reimbursement for Workshops (meals, lodging, registration, mileage).**
 - c. **If money is available, the registration fee will be paid for additional members by decision of the Executive Committee.**
2. **Payment of Speakers**
 - a. **Local speakers and branch members are to be offered remuneration.**
 - b. **Out-of-town speakers are to be paid as arranged by the program chair and as allowed by the program budget.**
3. **Study Group Expenses**

Each study group involved with a topic recommended by the Association is to be allowed money for use as follows: materials, speakers, AV rentals. This money should come from budgeted program funds.

4. Educational Foundation Program

The amount of money to be sent to the EFP is established by annual vote of the membership.

5. Audit of Treasurer's Books

At the end of the fiscal year the president shall appoint a branch member(s) to audit the treasurer's accounts. The member(s) reviewing the accounts shall date and sign the accounts to indicate the review has been performed.

6. Nominating Committee

The immediate past president or vice-president will alternate as chair of the nominating committee. Two members are to be chosen from the board and two from the branch.

7. Finance Committee.

The president shall appoint the finance committee. This may include a vice president, the treasurer, public policy chair or Educational Foundation program chair.

This group shall prepare a proposed budget for approval by the board at their February or March meeting. If a redraft is necessary, it can be presented at the next Board meeting. The budget must be published in the newsletter at least 14 days prior to the April meeting. The budget will be approved by the branch at the April Annual Meeting.

Travel expenses for the National convention are budgeted each year even though travel occurs bi-annually. The budget dollars from the year in which travel does not occur are carried over to the next year. This ensures that the line item is not overlooked and also allows for more consistency in budgeting from year to year.

Book sale profits in excess of the net amount budgeted will be transferred to the various funds based on the following percentages:

- 20% - Book Sale Reserve
- 20% - Branch Operations
- 30% - UW-EC Foundation – Local Scholarships
- 30% - National EF

The branch has made a commitment to increase the AAUW endowment fund at UW-Eau Claire and an annual contribution is earmarked for this fund. The amount of the contribution is 10% of the actual carry forward dollars that have not been designated for specific future activities.

8. Branch Directories

Branch directories should not be used by individuals or given to individuals, agencies, or organizations outside of AAUW unless the work of the Branch will be promoted by so doing. Such directories should be used or given only with the approval of the branch president, who will consult with the board members if the president feels this is necessary.

May, 2008

AAUW Public Policy Notes – “Superdelegates”

As a public policy novice in these busy political times I am always looking for answers to basic questions and an understanding of vocabulary that is used in the news, on the radio and in the press.

What about PLEO's?

QUESTION: What do you get if you add: 4 former Presidents and Vice-Presidents; 30 Democratic Governors; 51 Current Democratic Senators; 2 former Democratic Senators; 226 Current Democratic Congressmen; 2 former Speakers of the House; 485 Members and former chairs of the Democratic National Committee and a few assorted other?

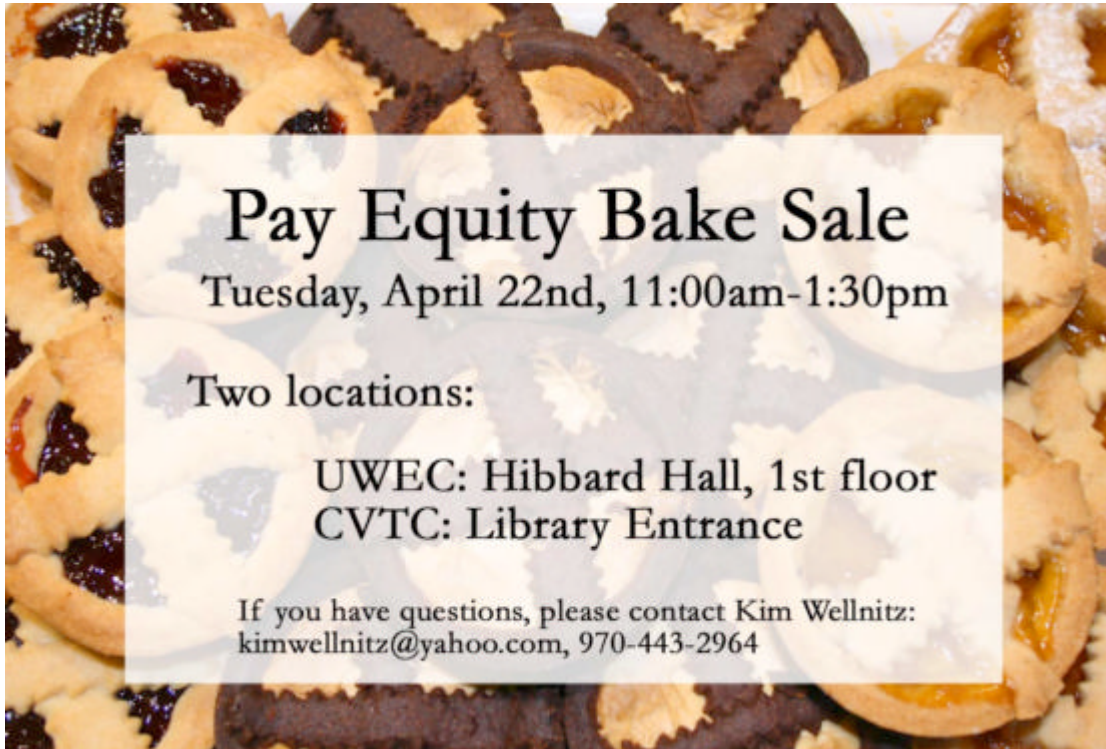
The answer is 795 Democratic Party Leaders and Elected Officials (PLEO's), commonly referred to as the Democratic 'Superdelegates'. What makes them so super is their ability to choose any candidate at the National Convention for presidential nominee. The term was coined by syndicated columnist Susan Etrich in 1984 as a derogatory term for this predominantly white and predominantly male group who are free to vote as they wish. In the 2008 Democratic Convention each of the 'superdelegates' votes is now equivalent to about 10,000 Democratic voters.

What then of the Republican Party? In both the Democratic Party and the Republican Party, there are a number of state-level unpledged delegates. As with the Democratic Party, the Republican party's national committee automatically become delegates without being pledged to any candidate. At the 2008 Republican National Convention there will be 123 members of the Republican National Committee along with 2,380 delegates. Each state sends three delegates (the national committeeman, national committeewoman, and state party chair) to the Republican National Convention.

Blogs on this website abound, so for more **nonpartisan** information on PLEO's I suggest you turn to the History Channel Website. Go to www.history.com and type "Superdelegates" in the search box in the upper right corner.

- Mary Beth Kelley-Lowe, Public Policy co-chair





Summer Fun: This is the last newsletter of the 2007-2008 year, but that doesn't necessarily mean nothing's going on before the Fall Kickoff. Don't forget to check our website for any announcements or activities that may crop up over the summer. You will also receive email notifications over the summer.

www.aauweauclaire.org



Congratulations Beth Ernst, new Mom!

Hugh Kozbial Ernst was born April 9th to Beth and Monty Ernst. He was 7 pounds and healthy and Mom is doing well.

Annual Meeting 2008, with pie



AAUW VISION STATEMENT - *AAUW will be a powerful advocate and visible leader in equity and education through research, philanthropy, and measurable change in critical areas impacting the lives of women and girls..*

AAUW MISSION - *AAUW advances equity for women and girls through advocacy, education and research.*

FOLIAGE - *Newsletter of the American Association of University Women - Eau Claire Branch*
Send or call items of interest to Kate Hinnant, kate.hinnant@gmail.com, 831-0182, 220 Roosevelt Ave, Eau Claire, WI 54701



Upcoming:

April 22, Tuesday, 11-1:30

Pay Equity Bake Sale

UWEC – Hibbard Hall, 1st Floor

CVTC – Front of the Library

May 14th, Wednesday, 6 pm

Eleanor Roosevelt Walk & “Girls Bullying Girls”

First Congregational Church*

*note location change!

220 Roosevelt Ave
Eau Claire, WI 54701